

**PROFILE
7th STREET**
Scale: Horiz. 1"=40'
Vert. 1"=4'

**PROFILE
ALLEY NORTH of 5th ST.**
Scale: Horiz. 1"=40'
Vert. 1"=4'

No. Address markers will be necessary when crossing telephone cables. They carry high voltage so don't touch.

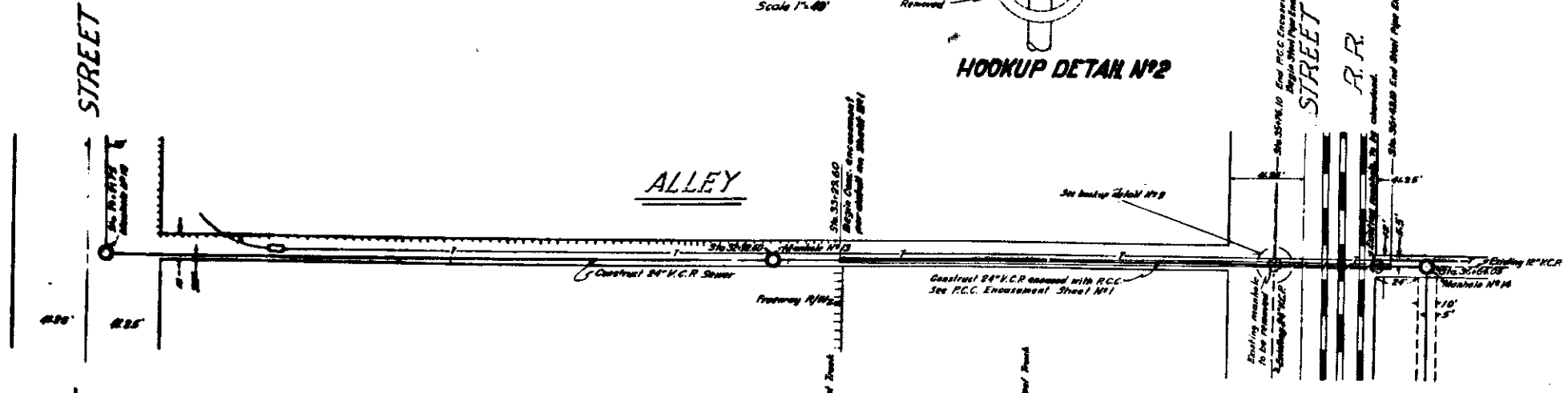
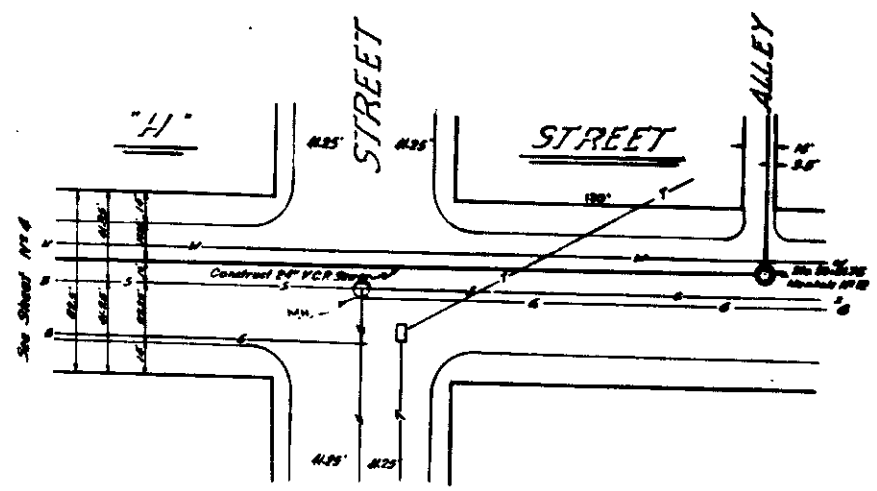
B.M. Street S.E. Cor
5" 3/4" x 7" SI
Elev. 107.65' M.S.L.



Scale 1"=40'



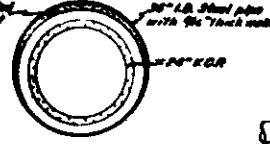
Scale 1"=40'



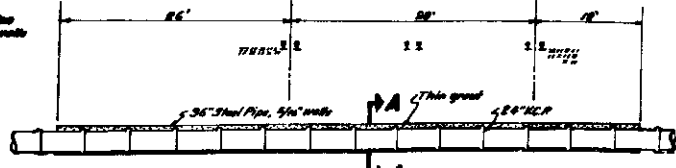
HOOKUP DETAIL #2

Here and Jacking centrally shall be used to place curbs under the traffic. The 24" R.C.C. shall be thrown through the opening after jacking. The pipe may carry a full joint of "Imperial" bituminous Resistor D-1-E - equal.

Operation of jacking shall be as close to the center of the track than a distance equal to 5 feet plus 1/3 times the depth of the top of curb pipe.



SECTION A-A



ENCASEMENT DETAIL